



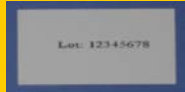
STYLE 72800B

DryBlend Youth Double Piqué Polo

DETAILS	
Weight	207 g/m2 (200 g/m2 in White)
Content	65% polyester / 35% ring spun cotton preshrunk double piqué knit
Features	DryBlend technology: delivers moisture-wicking properties Sideseamed Contoured welt collar and cuffs Heat transfer label Clean finished placket with reinforced bottom box 2 colour-matched buttons Twin needle bottom hem CPSIA Tracking Label Compliant
Sizes	YXS - YXL
Case Packs	YXS - YXL 36 pieces
Colours	13
SKU's	65

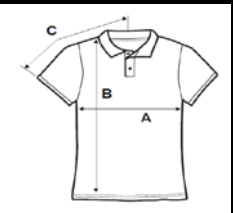
NOTES

^ Compliant with ANSI / ISEA 107 High Visibility Standards



SPECIFICATIONS

Size	Chest/inches (A)	Chest/cm	Length/inches (B)	Length/cm	CB Sleeve/inches (C)	CB Sleeve/cm
Youth X-Small	14.50	37	17	43	12	30
Youth Small	16	41	19	48	13	33
Youth Medium	17	43	21	53	13.75	35
Youth Large	18	46	23.50	60	15	38
Youth X-Large	19	48	26	66	16	41
Tol.	+/-1	+/- 2.54	+/-1	+/- 2.54	+/- 0.75	+/- 1.91



COLOURS

YXS - YXL			
Black	036C	Purple	081C
Charcoal	042C	Red	040C
Dark Heather	108C	Royal	051C
Forest Green	033C	RS Sport Grey	295H
Light Blue	069C	Safety Green^	188C
Maroon	083C	White	030N
Navy	032C		

Changes for 2016

YXS - YXL | Additions | Dark Heather

Net Plus 05 SKU's

Total Net Plus 05 SKU's