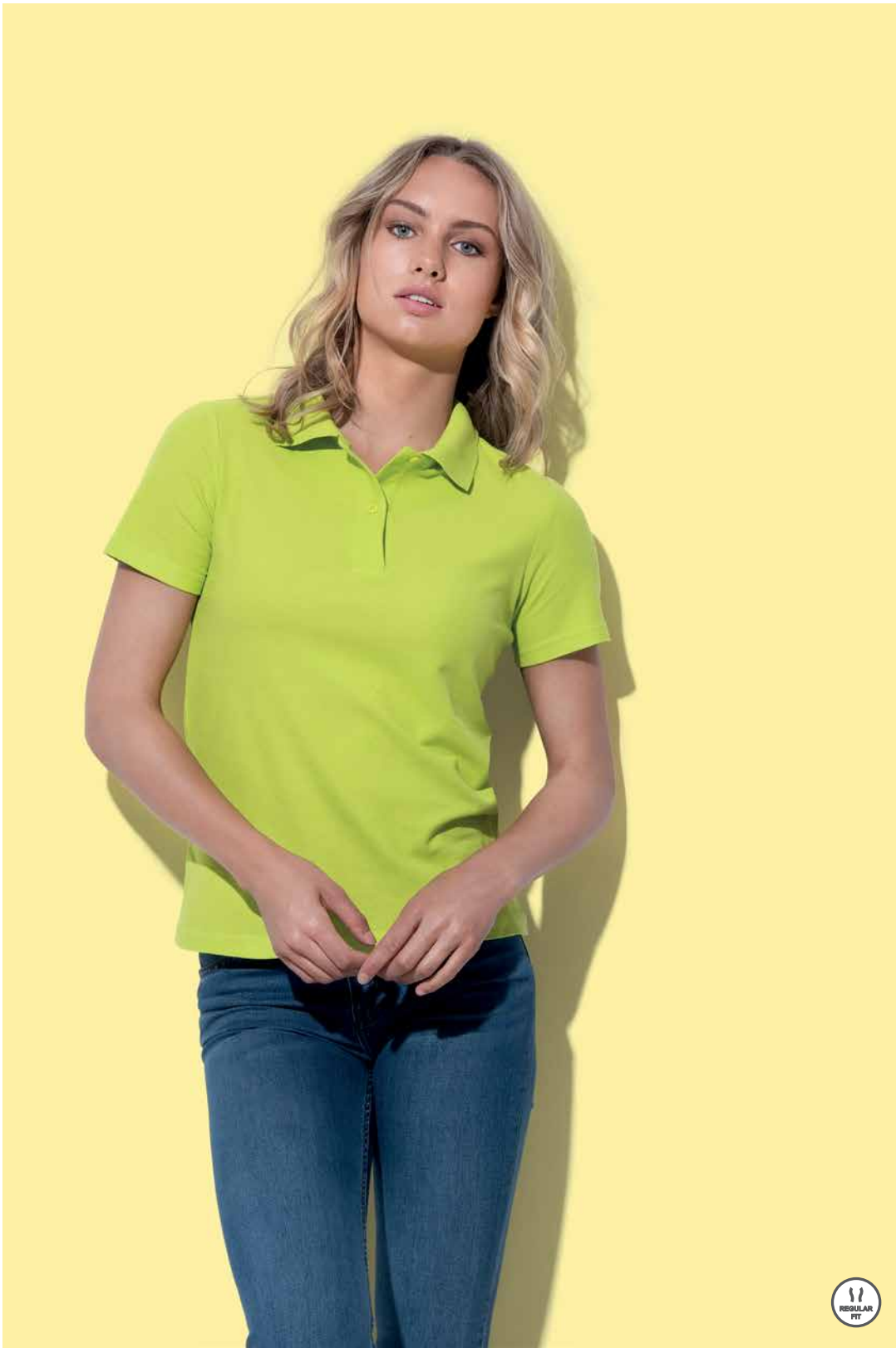




**Stedman**<sup>®</sup>  
collection



2XL: WHI, BLO, NAV

WHI	BLO	BLI	BRR
BOR	BGR	GYH	KIW
LBL	NAV	OCB	SRE
SPK	YEL		



	S	M	L	XL	2XL
A	44	47	50	54	58
B	61	63	65	67	68

(in cm)

**ST3100**

[www.stedman.eu](http://www.stedman.eu)

## Polo

Short sleeve polo shirt for women

Fabric: 100% ring-spun cotton; single jersey, piqué-look (GYH: 85% cotton, 15% viscose)  
Weight: 170 g/m<sup>2</sup>  
Sizes: S-2XL  
Box unit: 48 / carton

2 tone-on-tone buttons, no cuffs on sleeves, neck tape, side seams, size and care label in the collar, washable at 40 °C

Counterparts: ST3000 Polo for men  
ST3200 Polo for children