

B&C ID.501 - FU 150

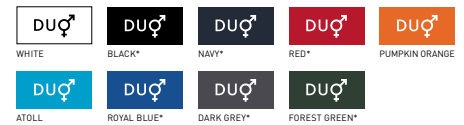
**OUTER
WEAR
/UNIT**



MEDIUM FIT

De Microfleece Basic by B&C

- Doorlopende "tone in tone" ritsluiting met ritstrekker
- Nekband
- 2 voorzakken met ritsluiting en ritstrekker
- Open zoom



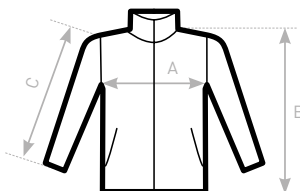
* KLEUREN BESCHIKBAAR IN 4XL

- Pluisvrije micro-fleece 100% polyester
- 280 g/m²
- XS - S - M - L - XL - 2XL - 3XL - 4XL *
- 5 stuks/polybag & 15 stuks/doos

* ALLEEN BESCHIKBAAR IN BLACK, NAVY, RED, ROYAL BLUE, DARK GREY EN FOREST GREEN



**DUO♂
CONCEPT**
met B&C ID.501 /w.



SIZES [CM]

B&C ID.501 FU 150	XS	S	M	L	XL	2XL	3XL	4XL
A HALF CHEST	50	53	56	59	62	65	68	71
B BODY LENGTH	66	67,5	69	70,5	72	73,5	75	76,5
C SLEEVE LENGTH	61	62,5	64	65,5	67	68,5	70	71,5