



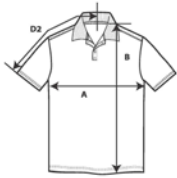
## 64800 - NEW



### Softstyle Adult Double Piqué Polo

#### DETAILS

<b>Weight</b>	177.0 G/SqM (White 172.0 G/SqM)
<b>Content</b>	100% Ring Spun Cotton
<b>Features</b>	Eurofit Sideseamed Contoured welt collar Tearaway label Rolled forward topstitched shoulder Clean finished placket with reinforced bottom box 2 colour-matched pearlized buttons Twin needle sleeve and bottom hems
<b>Sizes</b>	S-2XL
<b>Case Packs</b>	S - 2XL 36 PIECES
<b>Colours</b>	15
<b>SKU's</b>	75



#### SPECIFICATIONS

Centimeters	Toi-	Toi+	S	M	L	XL	2XL
<b>Chest (A)</b>	2.540	2.540	50.165	53.340	55.880	59.690	62.230
<b>Length from HPS (B)</b>	2.540	2.540	70.485	73.660	77.470	81.280	84.455
<b>Sleeve length (Center back) (D2)</b>	2.540	2.540	43.815	46.355	48.895	51.435	53.975
Inches	Toi-	Toi+	S	M	L	XL	2XL
<b>Chest (A)</b>	0.750	0.750	19.750	21.000	22.000	23.500	24.500
<b>Length from HPS (B)</b>	1.000	1.000	27.750	29.000	30.000	31.000	32.000
<b>Sleeve length (Center back) (D2)</b>	0.750	0.750	17.500	18.500	19.250	20.500	21.500

#### S-2XL

COLOURS	Code	Comments
Black	036	
Charcoal	042	
Daisy	098	
Dark Heather	108	
Forest Green	033	
Light Blue	069	
Maroon	083	
Navy	032	
Purple	081	
Red	040	
Ring Spun Sport Grey	295	90% Cotton, 10% Polyester
Royal	051	
Sand	038	
Sapphire	026	
White	030	

#### CHANGES

<b>Additions</b>	S, M, L, XL, 2XL	Black, Charcoal, Daisy, Dark Heather, Forest Green, Light Blue, Maroon, Navy, Purple, Red, Ring Spun Sport Grey, Royal, Sand, Sapphire, White
<b>Total Net Change</b>	75 SKU's	