

# KARIBAN

**REFERENCE :** K464

**SIZES :** XS\_S\_M\_L\_XL\_XXL

**COMPOSITION :**

Main fabric : Brushed Cotton / Polyester fleece 80/20 - 300  
80%cotton / 20%polyester

Lining 1 : Cotton thermal - 215 For hood lining 100%cotton

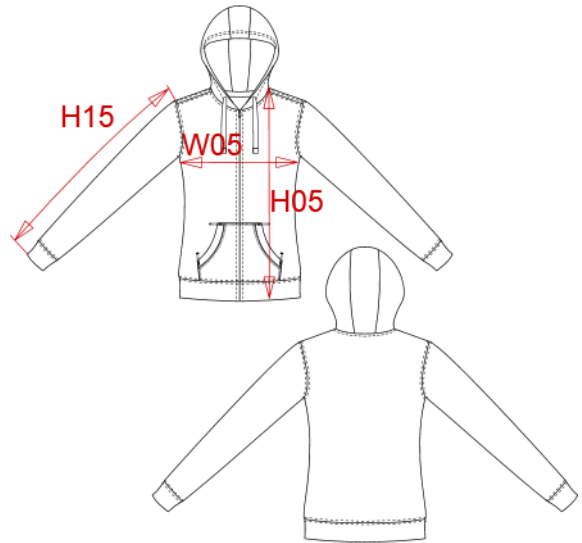
**WEIGHT :**

Main fabric : 300 gsm

Lining 1 : 215 gsm

**ARTICLE WEIGHT :**

506 gr/pc



DESCRIPTION
<b>Français :</b> Sweat-shirt zippé capuche femme
<b>English :</b> Ladies' hooded full zip sweatshirt
<b>Nederlands :</b> Damessweater met rits en capuchon
<b>Deutsch :</b> Damen-Kapuzen-Sweatshirt mit Reißverschluss
<b>Español :</b> Sudadera con capucha y cremallera para mujer
<b>Italiano :</b> Felpa donna cappuccio full zip
<b>Português :</b> Sweatshirt de senhora com fecho e capuz

COLORS	PANTONE SERIGRAPHIE
White	White
Black	Black
Navy	433C
Red	200C
Light royal blue	653C
Oxford grey	Based on Cool gray 7C

MEASUREMENT							
Description	XS	S	M	L	XL	XXL	
<b>H05 (L)</b> Hauteur totale avec BC/ Total height with rib	62	64	66	68	70	72	
<b>W05 (L)</b> 1/2 largeur poitrine à 1.5cm de l'emmanchure / 1/2 chest width at 1.5cm below armhole	45	48	51	54	57	60	
<b>H15I (L)</b> Longueur manche avec bord côte / Sleeve length with rib	61,50	62,50	63,50	64,50	65,50	66,50	

CARE LABEL				

PACKING	
Box	20 pcs / box All sizes => L:58.1cm W:37.8cm H:42cm GW:10.56kg NW:10.46 kg