

KARIBAN

REFERENCE : K687

SIZES : S_M_L_XL_XXL_3XL_4XL

COMPOSITION :

Main fabric : Nylon 210T AC coating - 70 For dark colors only
100%polyamide

Main fabric : Nylon 210T milky coating - 70 For light colors only
100%polyamide

Lining 1 : Jersey 130 For body lining 100%polyester

Lining 2 : Lining 210T For sleeve lining 100%polyester

WEIGHT :

Main fabric : 70 gsm

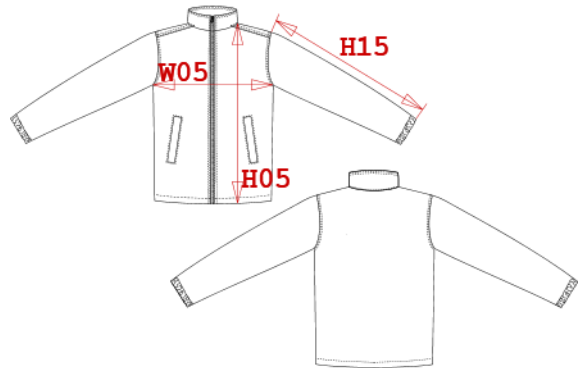
Main fabric : 70 gsm

Lining 1 : 130 gsm

Lining 2 : 60 gsm

ARTICLE WEIGHT :

438 gr/pc



DESCRIPTION
Français : Coupe-vent doublé
English : Lined windbreaker
Nederlands : Gevoerde windbreaker
Deutsch : Gefütterte Windjacke
Español : Cortaviento forrado
Italiano : Giacca a vento foderato
Português : Corta vento com forro

COLORS	PANTONE SERIGRAPHIE
Black	Black
Navy	433C
Red	200C
Dark grey	447C
Orange	1585C
Yellow	1235C
Light royal blue	653C
Forest green	5605C

MEASUREMENT							
Description	S	M	L	XL	2XL	3XL	4XL
H05 Hauteur totale / Total height	77,15	79,15	81,15	83,15	85,90	88,65	91,40
W05 1/2 chest width	58	61	64	67	71	75	79
H15 Sleeve length with cuff	62,50	64,50	66,50	68,50	70,70	72,90	75,10

CARE LABEL

PACKING	
Box	25 pcs / box S => L:62cm W:43cm H:23cm GW:11.80kg NW:10.80kg M => L:62cm W:43cm H:23cm GW:12.50kg NW:11.50kg L => L:62cm W:43cm H:23cm GW:12.80kg NW:11.80kg XL => L:70cm W:46cm H:23cm GW:13.70kg NW:12.70kg XXL => L:70cm W:46cm H:23cm GW:14.40kg NW:13.40kg 3XL => L:78cm W:48cm H:23cm GW:15.40kg NW:14.40kg 4XL => L:78cm W:48cm H:23cm GW:16.20kg NW:15.20kg