

# KARIBAN

**REFERENCE :** K477

**SIZES :** 4/6\_6/8\_8/10\_10/12\_12/14

**COMPOSITION :**

Main fabric : Brushed cotton / polyester fleece 80/20 - 280 80% cotton / 20%polyester

Fabric 1 : Cotton single jersey (32/1) - 180 For tone on tone hood lining 100%cotton

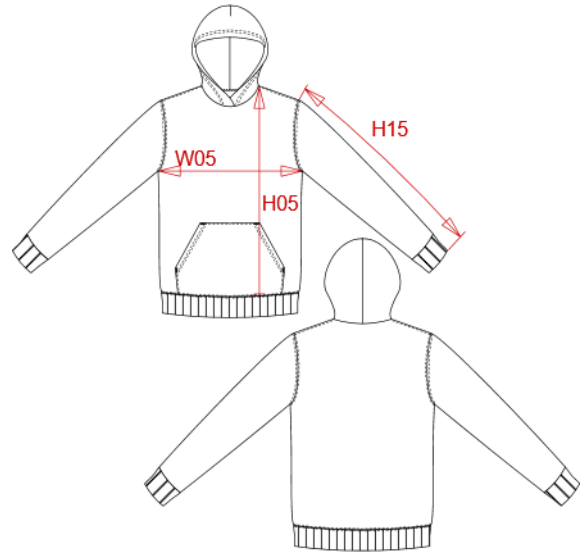
**WEIGHT :**

Main fabric : 280 gsm

Fabric 1 : 180 gsm

**ARTICLE WEIGHT :**

302 gr/pc



DESCRIPTION	
<b>Français :</b>	Sweat-shirt capuche enfant
<b>English :</b>	Kids' hoodie
<b>Nederlands :</b>	Kindersweater met capuchon
<b>Deutsch :</b>	Kinder Kapuzenshirt
<b>Español :</b>	Sudadera con capucha para niño
<b>Italiano :</b>	Felpa bambino cappuccio
<b>Português :</b>	Sweatshirt de criança com capuz

COLORS	PANTONE SERIGRAPHIE
White	White
Black	Black
Navy	433C
Dark grey	447C
Oxford grey	Based on Cool gray 7C
Red	200C
Light royal blue	653C
Yellow	1235C
Orange	1585C
Forest green	5605C
Wine	504C

MEASUREMENT						
Description	4/6	6/8	8/10	10/12	12/14	
<b>H05</b> Hauteur totale avec BC / Total height with rib	44,30	49,30	54,30	59,30	64,30	
<b>W05</b> 1/2 largeur poitrine / 1/2 chest width	35	38	41	44	47	
<b>H15B</b> Longueur manche avec poignet / Sleeve length with cuff	37,10	41,10	45	49,10	53,10	

CARE LABEL				

PACKING	
Box	20 pcs / box 4/6-8/10 => L:60cm W:40cm H:cm GW:kg NW:kg 10/12-12/14 => L:60cm W:40cm H:cm GW:kg NW:kg L:58.1cm W:37.8cm H:32cm GW:8.80kg NW:7.85kg