

KARIBAN

REFERENCE : K521

SIZES : 6/8_8/10_10/12_12/14

COMPOSITION :

Main fabric : Cotton poplin - 120 For white color 100%cotton

Main fabric : Cotton poplin - 125 For colors 100%cotton

WEIGHT :

Main fabric : 120 gsm

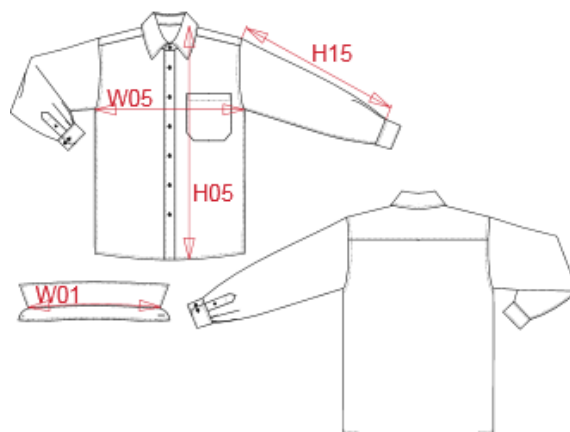
Main fabric : 125 gsm

FABRIC CONSTRUCTION AND FINISHING :

Easy Care

ARTICLE WEIGHT :

145 gr/pc



DESCRIPTION	
Français :	Chemise popeline manches longues enfant
English :	Kid's long sleeve popeline shirt
Nederlands :	
Deutsch :	LANGARM POPELINEHEMD FÜR KINDER
Español :	CAMISA DE MANGA LARGA POPELINA PARA NIÑO
Italiano :	CAMICIA BAMBINO POPELINE MANICHE LUNGHE
Português :	Camisa de criança manga comprida em popeline

COLORS	PANTONE SERIGRAPHIE
White	White
Navy	296C

MEASUREMENT						
Description	6/8	8/10	10/12	12/14		
W01 Longueur encolure / Neckline length	32,30	34	35,70	37,30		
W05 1/2 largeur poitrine / 1/2 chest width	39	42	45	48		
H15 Longueur manche sans poignet / Sleeve length without cuff	40,60	44,60	48,60	52,60		
H05 Hauteur totale dos / Back total height	53	59	64	69		

CARE LABEL				

PACKING	
Box	12 pcs / box All sizes => L:52cm W:34cm H:20cm GW:4.50kg NW:2.90kg