

KARIBAN

REFERENCE : K701

SIZES : 6/8_8/10_10/12_12/14

COMPOSITION :

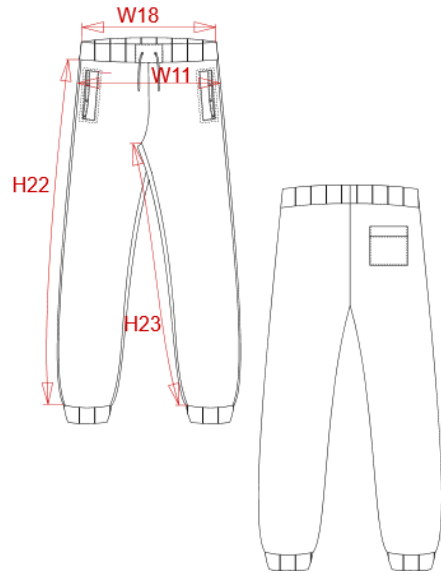
Main fabric : Brushed Cotton / Polyester fleece 80/20 - 300
80%cotton / 20%polyester

WEIGHT :

Main fabric : 300 gsm

ARTICLE WEIGHT :

335 gr/pc



DESCRIPTION
Français : Pantalon jogging enfant
English : Kid's jog pants
Nederlands :
Deutsch : KINDER-JOGGINGHOSE
Español : PANTALÓN DE FELPA PARA NIÑO
Italiano : PANTALONI JOGGING BAMBINO
Português : Calças de treino de criança

COLORS	PANTONE SERIGRAPHIE
White	White
Black	Black
Navy	433C
Oxford grey	Based on Cool gray 7C

MEASUREMENT						
Description	6/8	8/10	10/12	12/14		
W18E (K)* 1/2 taille élastiquée/ 1/2 elasticated	28	30	32	34		
W11 (K)* 1/2 bassin / 1/2 hip width	37	39	41	43		
H23 (K)* Longueur entrejambe / Inside leg length	55,50	61,50	67,50	73,50		

CARE LABEL

PACKING	
Box	20 pcs / box 6/8 => L:58.1cm W:37.8cm H:26.7cm GW:7.00kg NW:5.95kg 8/10 => L:58.1cm W:37.8cm H:26.7cm GW:7.80kg NW:6.75kg 10/12 => L:58.1cm W:37.8cm H:26.7cm GW:8.25kg NW:7.20kg 12/14 => L:58.1cm W:37.8cm H:26.7cm GW:8.90kg NW:7.85kg